



WHAT'S NEW IN SAP® CRYSTAL DASHBOARD DESIGN

CREATE SUPERIOR DATA VISUALIZATIONS
FASTER WITH NEW FEATURES

CONTENT

4 Key Features of SAP Crystal Dashboard Design

4 New in SAP Crystal Dashboard Design

5 Improved Workflows

5 A Redesigned User Interface

5 Components Browser

5 Object Browser

5 Integration of the Microsoft Excel Workflow

5 Copy and Paste

6 New Components and Features

6 New Components

6 Tree Map Chart

6 History Component

6 Tab Set Container

6 Panel Container

6 Trend Analyzer

6 Reset Button

6 Print Button

6 Maps

7 Connection Refresh Button

7 Horizontal and Vertical Bullet Charts

7 Sparkline Charts

7 Canvas Container

7 Push Button

7 Scorecard Selector

7 SWF Loader

7 New Features

7 Dual Y-Axis Option

8 Alerts in Selectors

8 Data Manager

8 Filtered Rows Insertion

8 Dynamic Selected Item

8 Trigger Keys

8 Add-On Manager

8 Chart Data Labels

8 Chart Range Slider

8 Chart Sorting

8 Hide or Show Series at Runtime

8 Load Default Scenario

8 Gauges Supporting Multiple Indicators

8 Forecasting

8 Selectors Allowing Multiple Insertions

9 New Data Connectivity and Integration Options

9 One-Click Export to SAP Crystal Reports Server Software

9 Export to Adobe Acrobat 9

9 Export to Adobe AIR

9 External Interface Connection

9 Enhanced Integration with SAP Crystal Reports Software

9 Lifecycle Management

9 Portal Integration Kit for IBM WebSphere

9 Connectivity to Adobe LiveCycle Data Services ES

10 Flexible Design and Customization Functionality

10 Themes

10 Software Development Kit

11 Improved Business Clarity with SAP Crystal Dashboard Design

11 Find Out More

KEY FEATURES OF SAP® CRYSTAL DASHBOARD DESIGN

SEE YOUR BUSINESS IN A WHOLE NEW LIGHT

New in SAP® Crystal Dashboard Design

Here's a quick snapshot of the key features in SAP® Crystal Dashboard Design software:

- Faster, easier creation of data visualizations
- Advanced visualization components
- Integration with SAP BusinessObjects™ Enterprise software, Adobe products, and SAP Crystal Reports® software
- Software development kit

SAP Crystal Dashboard Design software* delivers next-generation data visualization tools that let business users of different skill levels in small, midsize, and large companies transform complex data into actionable visual information. SAP Crystal Dashboard Design gives you the power of what-if analysis to shed light on any possible business decision.

With SAP Crystal Dashboard Design software, you can:

- Build sophisticated dashboards and visualizations – quickly
- Customize your dashboards to meet the unique needs of your business environment
- Connect your dashboards to any type of external data source



The user interface for SAP Crystal Dashboard Design has been redesigned using Adobe Flash 9 and Adobe Flex technologies. The object browser, property windows, menus, and toolbars have been completely redesigned to make it easier for you to create data visualizations and get better results faster.

- Maximize the value of your IT solution with visual front ends
- Deploy your dashboards in Microsoft Office, Adobe PDF, portals, or on the Web
- Empower everyone in your organization to transform the way you run your business today with actionable visual information

SAP Crystal Dashboard Design makes it even easier for you to create data presentations and dashboards from personal and corporate data sources by providing the following key features:

- Improved workflows
- New components and features
- New data connectivity and integration options
- Flexible design and customization functionality

*Includes SAP Crystal Dashboard Design, personal edition (formerly known as Xcelsius® Engage), and SAP Crystal Dashboard Design, departmental edition

IMPROVED WORKFLOWS

GET BETTER RESULTS AND INCREASE PRODUCTIVITY

A Redesigned User Interface

The user interface for SAP Crystal Dashboard Design has been redesigned using Adobe Flash 9 and Adobe Flex technologies (see Figure 1). The object browser, property windows, menus, and toolbars have been completely redesigned to make it easier for you to create data visualizations and get better results faster.

Components Browser

The look and feel of the components browser has changed significantly from previous versions.

Interface

The components browser displays components in a sliding accordion menu. You can display components in a category, tree, or list view.

Favorites

You can add frequently used components to the favorites category in the category view.

Object Browser

The object browser has been enhanced with the new features described below.

Lock and Unlock

You can lock components in the object browser to prevent them from being selected or changed while the visualization is being designed.

Move Forward and Back

You can more easily move components forward or backward in layers of the visualization by dragging the component

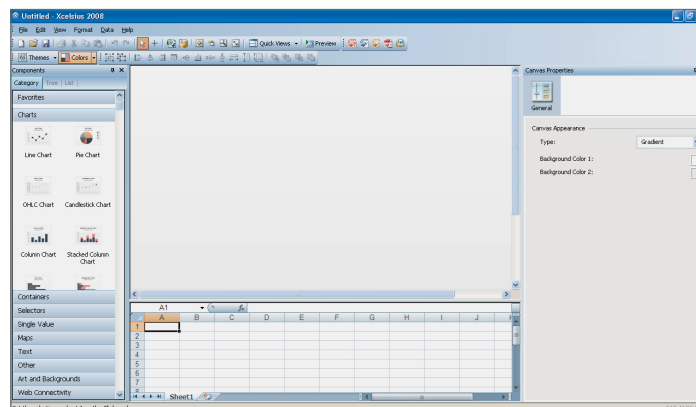


Figure 1:
Redesigned User
Interface

or group toward the top or bottom of the object browser. Alternatively, you can select a component or group and then click the directional arrows at the bottom of the object browser.

Group and Ungroup

Grouped components appear as subsets in the object browser. You can add to or remove components that are in a group in the object browser.

Hide and Show

You can hide or display individual components and groups by clicking the dot or check mark located in the column under the hide icon. To hide or show any component on the canvas, click the hide icon.

Integration of the Microsoft Excel Workflow

The Microsoft Excel data-mapping process is fully integrated with the designer tools in SAP Crystal Dashboard Design, eliminating any need to alternate back and forth between Microsoft Excel and the designer. While a spreadsheet is a supported data source, you never need to reimport one to adjust formulas or formats.

Copy and Paste

You can increase your productivity by copying and pasting components between different instances of SAP Crystal Dashboard Design.

With SAP Crystal Dashboard Design, you can:

- **Build** sophisticated dashboards and visualizations – quickly
- **Customize** your dashboards to meet the unique needs of your business environment
- **Connect** your dashboards to any type of external data source

- **Maximize** the value of your IT solution with visual front ends
- **Deploy** your dashboards in Microsoft Office, Adobe PDF, portals, or on the Web
- **Empower** everyone in your organization to transform the way you run your business today with actionable visual information

NEW COMPONENTS AND FEATURES

EMPOWER BUSINESS USERS WITH IMPROVED DATA VISUALIZATION

New Components

The new components in SAP Crystal Dashboard Design are described below.

Tree Map Chart

This chart enables you to display multiple dimensions of a data set using size and color within a space-constrained environment (see Figure 2).

History Component

Use this component to provide a simple method for your business users to track previous data updates, queries, and so on, right from the visual model created with SAP Crystal Dashboard Design. The history component captures a single value (cell) and inserts it into a contiguous row or column of data, based on a trigger or time interval.

Tab Set Container

This component enables you to more easily create and configure multitab dashboards that support dynamic visibility, without writing any Microsoft Excel logic (see Figure 3).

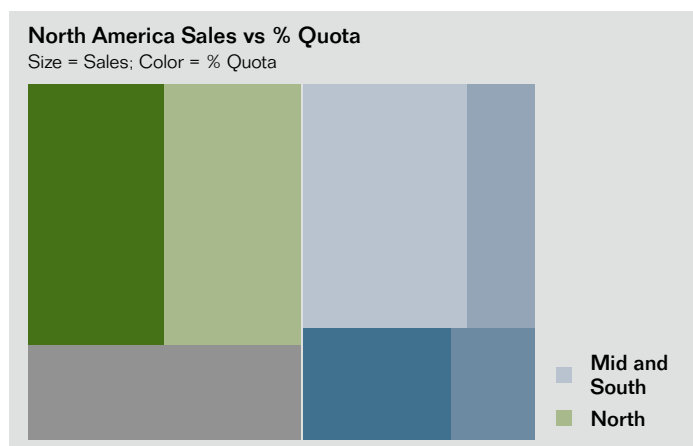


Figure 2:
Tree Map Chart

Panel Container

The panel container lets you group multiple components into a single well-organized scrollable container.

Trend Analyzer

Empower your business users to quickly spot trends and patterns in your company data. This component automatically inserts linear, logarithmic, polynomial, power, or exponential statistical calculations into charts, tables, and other components at runtime.

Reset Button

Take advantage of this component to save your business users from ever needing to reopen or reload models in SAP Crystal Dashboard Design just to see the original data in the model. They can quickly reset to the original state of the visual model with a click of a button.

Print Button

Create and share data presentations and dashboards that look stunning even on paper. Take advantage of the new print button to print models in SAP Crystal Dashboard Design in a high-quality format. Since the print button always prints the latest state of the model, you don't have to worry about losing your what-if scenario analysis or live-data refresh when printing your models.

Maps

With the comprehensive map library, you can create geographical representations of your data. The map library includes maps of countries for various areas of the world. Each country is further divided into its appropriate subdivisions, such as state, province, county, and so on.

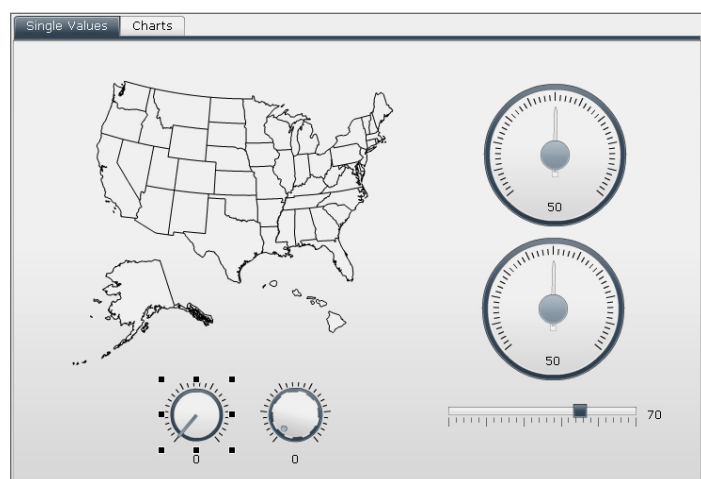


Figure 3:
Tab Set Container

Budget	Target	Actual	Status
Income	\$100,000	\$105,000	↓
Housing	\$35,000	\$33,075	↑
Food	\$25,000	\$24,003	↑
Transportation	\$15,000	\$19,845	↓
Entertainment	\$10,000	\$10,045	↑
Baby	\$5,000	\$15,000	↓

Figure 4:
Scorecard Selector

options to enable and configure alerts in columns and to add headers that allow business users to sort the columns at runtime (see Figure 4).

SWF Loader

The small Web format (SWF) loader enables you to load SWF files from both SAP Crystal Dashboard Design software and non-SAP software at runtime.

Connection Refresh Button

This button makes it easier to refresh the data in the visual models within SAP Crystal Dashboard Design. It enables business users to refresh all external data connections and retrieve the latest data directly from the data source – with a single click.

Horizontal and Vertical Bullet Charts

These charts display information in a condensed and focused format. Each bullet chart presents a single primary measure as a vertical or horizontal bar. A marker indicates a target or performance goal, and changing color hues behind the bar indicate qualitative ranges of performance.

Sparkline Charts

These charts, based on the sparkline graphic created by data visualization expert Edward Tufte, display a one-dimensional range of numeric data in a brief, condensed way that can be quickly interpreted.

Canvas Container

The canvas container is similar to the panel container but does not have any art (for example, background, borders, heading bar, and so on).

Push Button

You can configure this component to set the specific values of one or multiple cells at the push of a button. The values change only when business users push the button, providing more control over when the data is copied to the destination cells.

Scorecard Selector

Using this component, business users can quickly create balanced scorecards with point-and-click ease. It is similar to the list view selector but includes

New Features

The new features in SAP Crystal Dashboard Design are described below.

Dual Y-Axis Option

This feature enables you to plot a series on either the primary or secondary axis (see Figure 5). It's available on line, column, stacked-column, bar, stacked-bar, combination, area, and stacked-area charts.

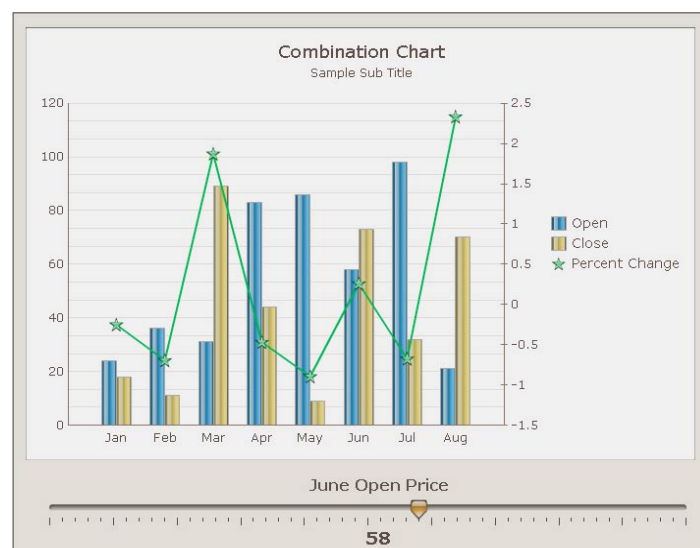


Figure 5:
Dual Y-Axis Option

Alerts in Selectors

This feature allows you to use existing alerting methodology to configure indexed-based selectors (such as a list box or ticker) to display an alerts icon for each label. The alerts icons provide a quick and easy way for letting business users know when a predefined value has been reached – pointing users in the right direction for root-cause analysis.

Data Manager

To eliminate the time-consuming task of managing multiple data-connection buttons, SAP Crystal Dashboard Design now has a central location where you can create and manage all the external data connections for your visual models.

Filtered Rows Insertion

A selector component can be bound to a source data range of multiple rows with duplicate labels; when you select a label, the component filters the range to insert only the rows corresponding to that label.

Dynamic Selected Item

In list-based selectors, you can change the labels dynamically through another component in the model.

Trigger Keys

Trigger keys are bound to variable cells and are set to fire when the cell value matches a target value. Trigger keys are used to trigger data connections and are also available in the URL button and connection refresh button.

Add-On Manager

The add-on manager feature allows you to install or remove add-ons from within SAP Crystal Dashboard Design.

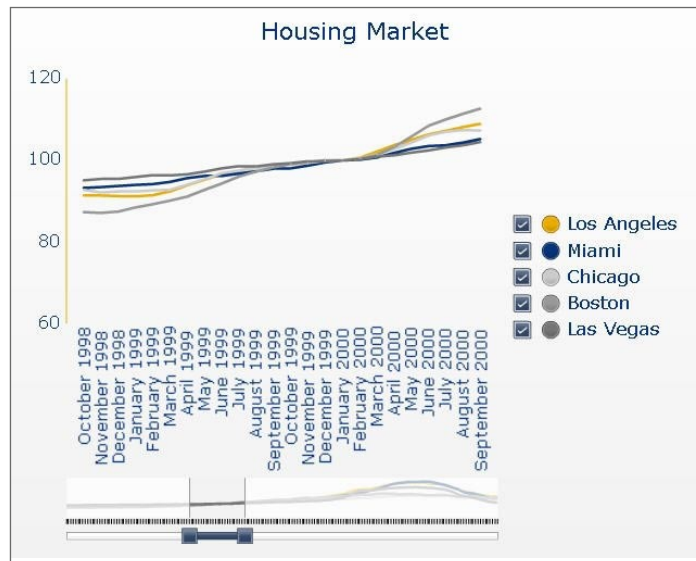


Figure 6:
Chart Range Slider

Chart Data Labels

A new option is available to overlay data labels on or around chart markers.

Chart Range Slider

For many charts, you can now add a range slider to allow business users to focus on a particular data set, rather than viewing the entire chart at once (see Figure 6).

Chart Sorting

A new sorting option on the chart properties panels allows designers to sort the chart data by data values or category labels, and for a single or multiple series of charts.

Hide or Show Series at Runtime

A new chart property, available when legends are enabled, lets business users select which series are shown in the chart.

Load Default Scenario

This feature now allows users to create and load a default scenario that sets the model to a specific state when an SWF file loads.

Gauges Supporting Multiple Indicators

Designers can now configure gauges to display multiple indicators, and set the indicator type to be a needle, outside marker, or inside marker.

Forecasting

The trend analyzer can now be configured to forecast data for a specific time period based on the trend found in existing data.

Selectors Allowing Multiple Insertions

You can now configure many selectors to insert multiple chunks of data from different sources into multiple destinations at once.

NEW DATA CONNECTIVITY AND INTEGRATION OPTIONS

INTEGRATE WITH ADOBE PRODUCTS AND SAP CRYSTAL REPORTS

One-Click Export to SAP Crystal Reports Server Software

Enjoy trouble-free management of your models in SAP Crystal Dashboard Design by saving and exporting them to SAP Crystal Reports Server software with a click of a button.

Export to Adobe Acrobat 9

Embed, resize, and move around models created with SAP Crystal Dashboard Design inside PDF documents by taking advantage of the new Flash content support features in Adobe Acrobat 9.

Export to Adobe AIR

Expand the reach and use of your business data by delivering it as part of user-friendly desktop applications and widgets.

External Interface Connection

Pass data from an SWF file into or out of a specific cell range using push-or-pull technology.

Enhanced Integration with SAP Crystal Reports Software

Create interactive charts and what-if scenario models for your reports (see Figure 7). This enhanced integration automates the process of binding your report data to the visual models created with SAP Crystal Dashboard Design – eliminating hours of manual coding.

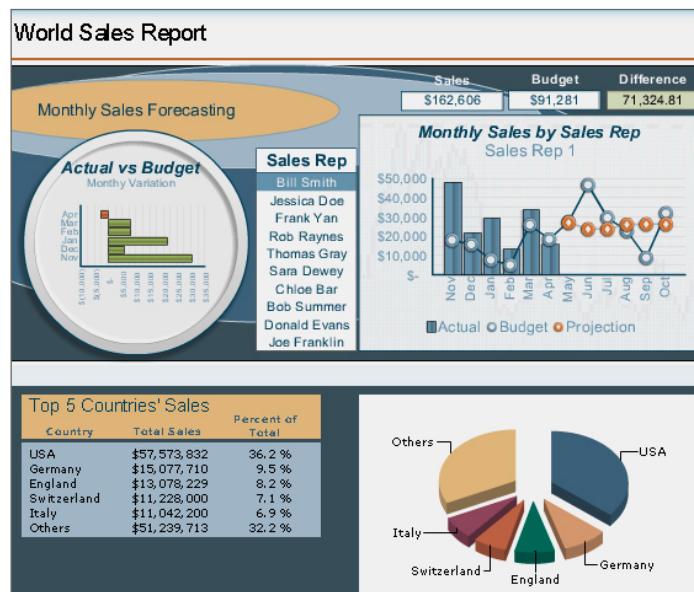


Figure 7: Visual Models from SAP Crystal Dashboard Design in SAP Crystal Reports®

Lifecycle Management

Leverage the lifecycle management functionality in SAP BusinessObjects Enterprise software to move models created with SAP Crystal Dashboard Design from development to production environments.

Portal Integration Kit for IBM WebSphere

Integrate content from SAP Crystal Dashboard Design into your IBM WebSphere portal. SAP Crystal Dashboard Design allows you to turn your dashboards into IBM WebSphere portlets without coding, and it enables the creation of complex dashboards that interact across portlets.

Connectivity to Adobe LiveCycle Data Services ES

Create operational dashboards using your real-time transactional data sources, and reduce network congestion by leveraging Adobe LiveCycle Data Services ES to broadcast data to multiple dashboards in real time.

The Microsoft Excel data-mapping process is fully integrated with the designer tools in SAP Crystal Dashboard Design, eliminating any need to alternate back and forth between Microsoft Excel and the designer.

FLEXIBLE DESIGN AND CUSTOMIZATION FUNCTIONALITY

USE PREBUILT THEMES AND A SOFTWARE DEVELOPMENT KIT



Figure 8:
New Themes

Themes

Customize the look and feel of your data presentations and dashboards with prebuilt themes and color palettes (see Figure 8).

Software Development Kit

Work with Adobe Flex to create custom visualization components and data connectors for use with SAP Crystal Dashboard Design by taking advantage of the software development kit that's included with SAP Crystal Dashboard Design.

IMPROVED BUSINESS CLARITY WITH SAP CRYSTAL DASHBOARD DESIGN

TAKE THE NEXT STEP

Find Out More

To learn more about SAP Crystal Dashboard Design or to download a free trial, please visit us on the Web at www.sap.com/sapcrystal.



Present information in a condensed format using bullet charts that display a single primary measure as a vertical or horizontal bar. A marker indicates a target or performance goal, and changing color hues behind the bar indicate qualitative ranges of performance.

SAP, R/3, SAP NetWeaver, Duet, PartnerEdge, ByDesign, Clear Enterprise, SAP BusinessObjects Explorer, and other SAP products and services mentioned herein as well as their respective logos are trademarks or registered trademarks of SAP AG in Germany and other countries.

Business Objects and the Business Objects logo, BusinessObjects, Crystal Reports, Crystal Decisions, Web Intelligence, Xcelsius, and other Business Objects products and services mentioned herein as well as their respective logos are trademarks or registered trademarks of SAP France in the United States and in other countries.

All other product and service names mentioned are the trademarks of their respective companies. Data contained in this document serves informational purposes only. National product specifications may vary.

These materials are subject to change without notice. These materials are provided by SAP AG and its affiliated companies ("SAP Group") for informational purposes only, without representation or warranty of any kind, and SAP Group shall not be liable for errors or omissions with respect to the materials. The only warranties for SAP Group products and services are those that are set forth in the express warranty statements accompanying such products and services, if any. Nothing herein should be construed as constituting an additional warranty.

www.sap.com/contactsap